

RATIONALE

NEW STANDARD FOR OPERATING PRESSURES UP TO AND INCLUDING 1500 PSI

SAE AS6120

SAE Technical Standards Board Rules provide that: "This report is published by SAE to advance the state of technical and engineering sciences. The use of this report is entirely voluntary, and its applicability and suitability for any particular use, including any patent infringement arising therefrom, is the sole responsibility of the user." SAE reviews each technical report at least every five years at which time it may be reaffirmed, revised, or cancelled. SAE invites your written comments and suggestions.

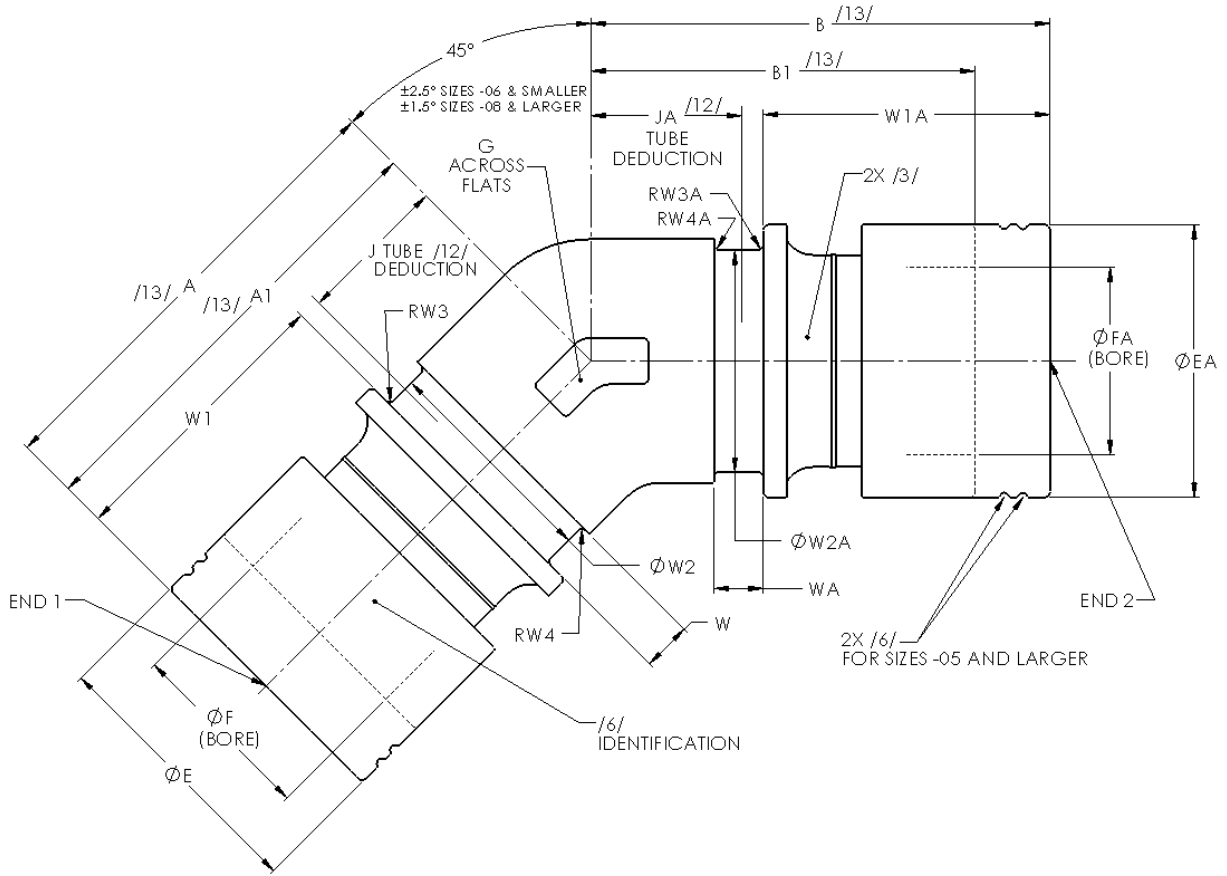
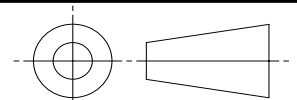


FIGURE - 1 FITTING ASSEMBLY, ELBOW, 45 DEGREES

SAE values your input. To provide feedback on this Technical Report, please visit <http://www.sae.org/technical/standards/AS6120>

THIRD ANGLE PROJECTION



CUSTODIAN: G-3/G-3B

PROCUREMENT SPECIFICATION: /4/ AS6116

**SAE Aerospace**  
An SAE International Group

**AEROSPACE STANDARD**  
FITTING ASSEMBLY, ELBOW, 45°  
AXIALLY SWAGED, HYDRAULIC, UP TO 1500 PSI

**SAE AS6120**  
SHEET 1 OF 3